



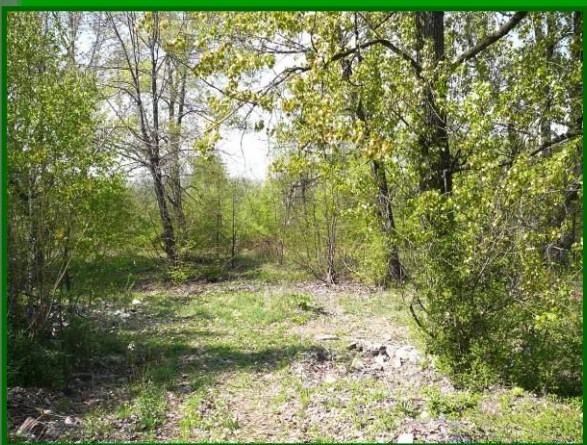
Spółka Restrukturyzacji Kopalń S.A.

INVESTMENT OFFER

Unbuilt real estate by the street Szyby Rycerskie
in Bytom - Lagiewniki
– The Silesian province.

Real estate No 133/19 (55 349 m²) is
located in the eastern part of Bytom -
Lagiewniki.

Characterized by flat terrain,
in the surroundings are industrial.



Bytom - town with district rights - located in
southern Poland in the Silesian Upland, on the
river Bytomka in the center Silesian conurbation.

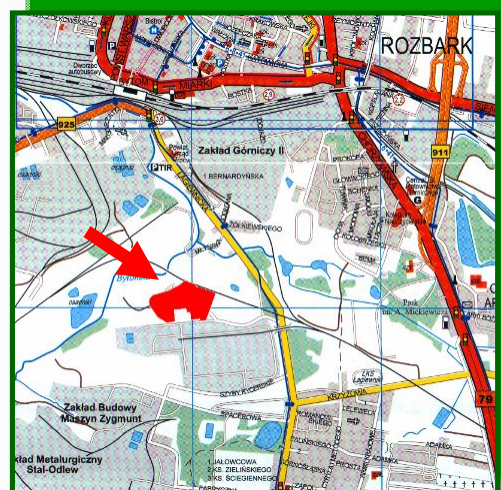
It lies on crossing main communications trails
about regional, domestic and international
character.

This ensures good connections with the cities of
Upper-Silesian Agglomeration and important
urban centers in the country, but also from the
countries: the Czech Republic, Slovakia,
Germany and Ukraine.

Throughout the city there are provincial roads
No 911 and 925, national road No. 11, 78, 79, 88,
94 and the European road E40.

In the future, additional road connections to the
city in a north-south highway will provide A1.

Air transport provides located near the
international airport of "Katowice" in Pyrzowice,
the international airport in Kraków-Balice airport
and an international Ostrava-Mosnov in the
Czech Republic.



© Publishing house Witański - Katowice

GROUND DATE

Owner –

The Treasury of Poland

Perpetual usufructuary -

Spółka Restrukturyzacji Kopalń S.A.
ul. Strzelców Bytomskich 207; 41-914 Bytom
Tel.: +48 (prefix) 32/35 - 13 - 300, 32/35 - 13 - 301
Fax: +48 (prefix) 32/35-13-309; 32/35-13-310; www.srk.com.pl

Use according to the development plan -

Lack of the development plan. According to the study of land use conditions and the spatial planning from 25.10.2000 r. the plot lies in the production zone.

Actual way of development -

Flat area covered with grass and bushes about character of the wild flora. Similar to the shape of a rectangle.

Informtions about neighbouring -

In the surroundings are industrial – rubber plants and label concrete.

Existing utilities –

The real estates are situated on the area where connecting all basic networks of arming the area is possible.

Transport accesibility –

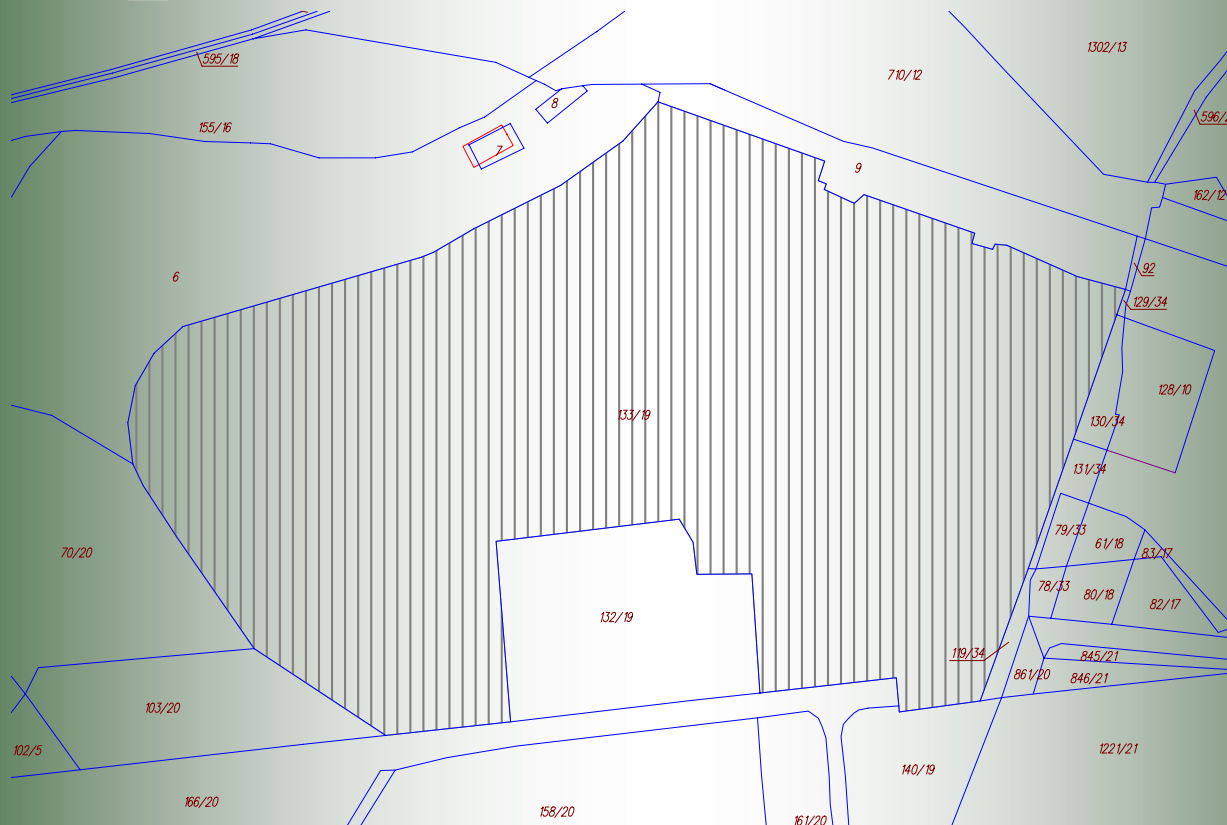
Connection with street Szyby Rycerskie. Access to public roads: province road No. 925 and national roads no 79, 94.

Suggested form of disposal -

Sale of the perpetual right to use for years till 2089 years by way of the public tender.

Contact person –

The Specialist for projects and marketing, Iwona Krol
tel.: +48 (prefix) 32/35-13-366; e-mail.: ikrol@srk.com.pl



RECORD MAP

TOTAL AREA 5,5349 ha (55 349 m²)